

## Lesson 8 "French Lullaby"

Dynamics signs in music tell us how loud or soft we should play.

*p* = piano = soft

*mf* = mezzoforte = medium loud

*f* = forte = loud

### French Lullaby: Dodo, l'enfant do

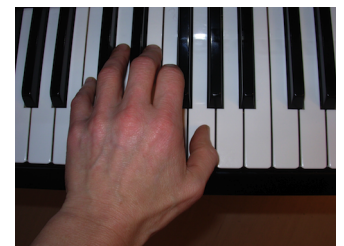


"Dodo l'enfant do" (Sleep, little baby) is a French lullaby.  
Play softly with your right hand. Count to four in each measure.

French lullaby

### Leap Song

Play "Leap Song" with your left hand. Play mezzoforte, medium loud.  
Medium loud is in the middle between piano and forte.



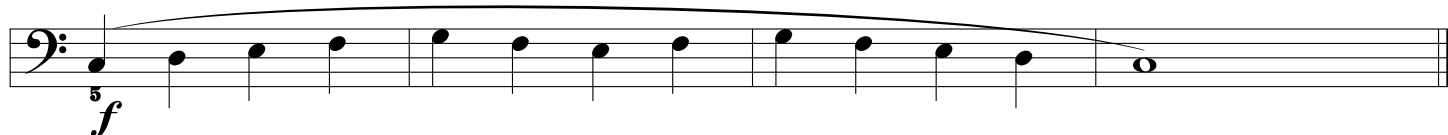
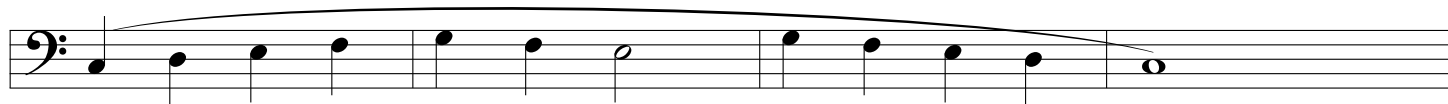
©Tooske Hinloopen 2004

Free online piano lessons:

## Cat Fur Song

Play "Cat Fur Song" with your left hand. As the third line is a little more difficult than the rest it is advisable to practise this line more often.

©Tooske Hinloopen 1998



### Exercise for playing with two hands together

Play legato with your left hand.



Right hand plays C-G together with every little finger, every middle finger and every thumb of the left hand:



Free online piano lessons: